

Vol. 01

Health Pathways Project Newsletter



Greetings from the KAMS Workforce Team

Welcome to the first edition of our Health Pathways Project (HPP) Newsletter. How quickly time passes! We are now a year into the HPP and would like to provide an update on its progress to our valued participants, communities, stakeholders and partners.

Those of you who were involved in the project design may remember the various activities that were being planned to support our RTO students in their study journeys. We are pleased to report that we have had 19 graduates from our 2024 cohorts of Aboriginal and/or Torres Strait Islander Health Practitioners and Mental Health workers. These students have all gone on to various roles in their community organisations and we are proud to have helped them achieve their career goals.

Some of the HPP supports that helped these students, include our Social and Emotional Wellbeing (SEWB) Support Officer, Jess Edgar, who provides one on one sessions and referrals to any students who need to talk about some of the more triggering content in their course.

Our HPP funded Clinical Educator, Amanda Cornwall is providing additional support to students while on their work placements through virtual meetings and site visits. She's also designing a graduate program for Aboriginal Health Practitioners, watch this space!

Tutoring and Peer Mentoring supports are still being fine tuned, we hope to have an update for you in the next edition. Until then, take care and please don't hesitate to reach out if you have questions about any of our project activities.

What's been happening?

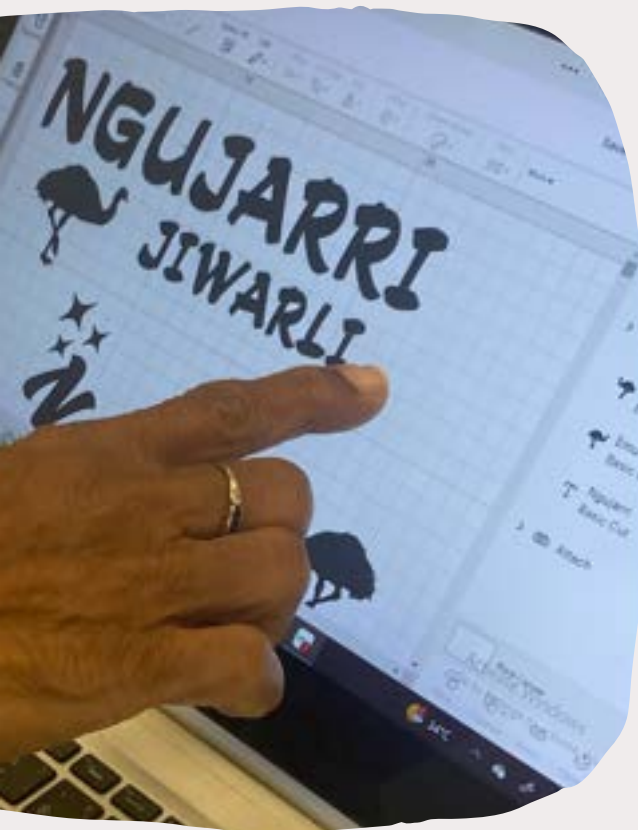


CERTIFICATE II IN COMMUNITY HEALTH & WELLBEING

KAMS RTO have successfully added the Cert II to our scope. This qualification is being planned for delivery in 2026 and consists of 9 units of competency. We are still ironing out the details of the delivery location and format, which means we are open to input and possible partnerships! If you have any ideas you'd like to contribute or if you'd like more information about this qualification, please contact our RTO Coordinator.

Rebecca Walding, 0432 648 293 or rtocoordinator@kamsc.org.au

You can use the same details to refer anyone who may be interested in participating in the Certificate II course, noting that our delivery of this qualification is specifically designed for Aboriginal and/or Torres Strait Islander learners.



SOLID CONNECTIONS

KAMS has partnered with North Regional TAFE to expand the Solid Connections Program. Solid Connections gives participants an opportunity to prepare for training and employment, building skills through various activities and training.

Solid Connections One (SC1) includes delivery of the GATE program, practicing numeracy, digital literacy and communication skills. Solid Connections 2 (SC2) includes building a professional profile, undertaking the Kimberley Empowerment and Healing Leadership Program (KEHLP) and a skillset of accredited units. Both SC1 and SC2 include first aid and engaging activities such as t-shirt design, candle making or event planning.

In late 2024, SC1 was run in Broome. In 2025, SC1 was delivered in Joy Springs Community, outside of Fitzroy Crossing, SC2 was then delivered in Fitzroy Crossing. In Semester 2 of 2025, SC1 and SC2 will be delivered in Halls Creek,

If you'd like more information on Solid Connections, please contact coordinator

Rahaney Poelina, 0427 979 543 or rahaney.poelina@kamsc.org.au



SOLID Connections
Connect, Learn, Grow



SC2, Fitzroy Crossing
2025

**“You need to create a spark to start a
fire and I think this
program does that” – Lorraine Dodd,
Solid Connections Participant, Broome 2024**



Joy Springs
Community, 2025



Candle making in
SC 1, Broome 2024

SOLID LEADERSHIP



2025 RISING LEADERS PROGRAM PARTICIPANTS

In February 2025, 11 participants commenced the Rising Leaders program which includes undertaking a diploma of Leadership & Management. KAMS have again partnered with NR TAFE for delivery of this training.



2025 HIGH POTENTIAL PROGRAM PARTICIPANTS

13 participants in the High Potential Program are undertaking leadership assessments, individual development planning along with Leader to Leader Modules which include peer-to-peer coaching and cohort-based development sessions.



Roles currently available include:

- **RTO Educator**
 - Certificate IV in Aboriginal and/or Torres Strait Islander Primary Health Care
- **RTO Student Support Admin**
- **Instructional Designer**
- **Language Literacy and Numeracy (LLN) Support Person**
- **Workforce Navigator – West Kimberley**

If you'd like more information on any of these roles, please reach out.

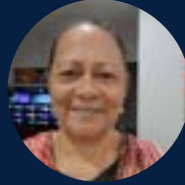
Kimberley Aboriginal Medical Services Ltd
Phone: (08) 9194 3200
[**recruitment@kamsc.org.au**](mailto:recruitment@kamsc.org.au)

**To view all current vacancies, search for 'KAMS' on
[**seek.com.au**](https://www.seek.com.au).**

Meet the Health Pathways Project Team



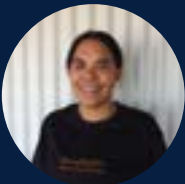
Julia McIntyre
Executive Manager



Raeylene McKenna
RTO Senior Manager



Louise McKenna
Student Support Team Leader



Rahaney Poelina
Solid Connections Coordinator



Amanda Cornwall
Clinical Educator



Jessica Edgar
SEWB Support Officer



Trenna Wadge
Solid Leadership Coordinator



Rebecca Walding
Workforce Coordinator

For more information

12 Napier Terrace,
Broome WA 6725
Phone: (08) 9194 3295
Email:

rtocoordinator@kamsc.org.au

Our Sponsors

Many thanks to our project partners and funding organisations:



Australian Government
National Indigenous
Australians Agency



NIAA



**North
Regional**



Government of **Western Australia**
Department of **Training
and Workforce Development**



NACCHO